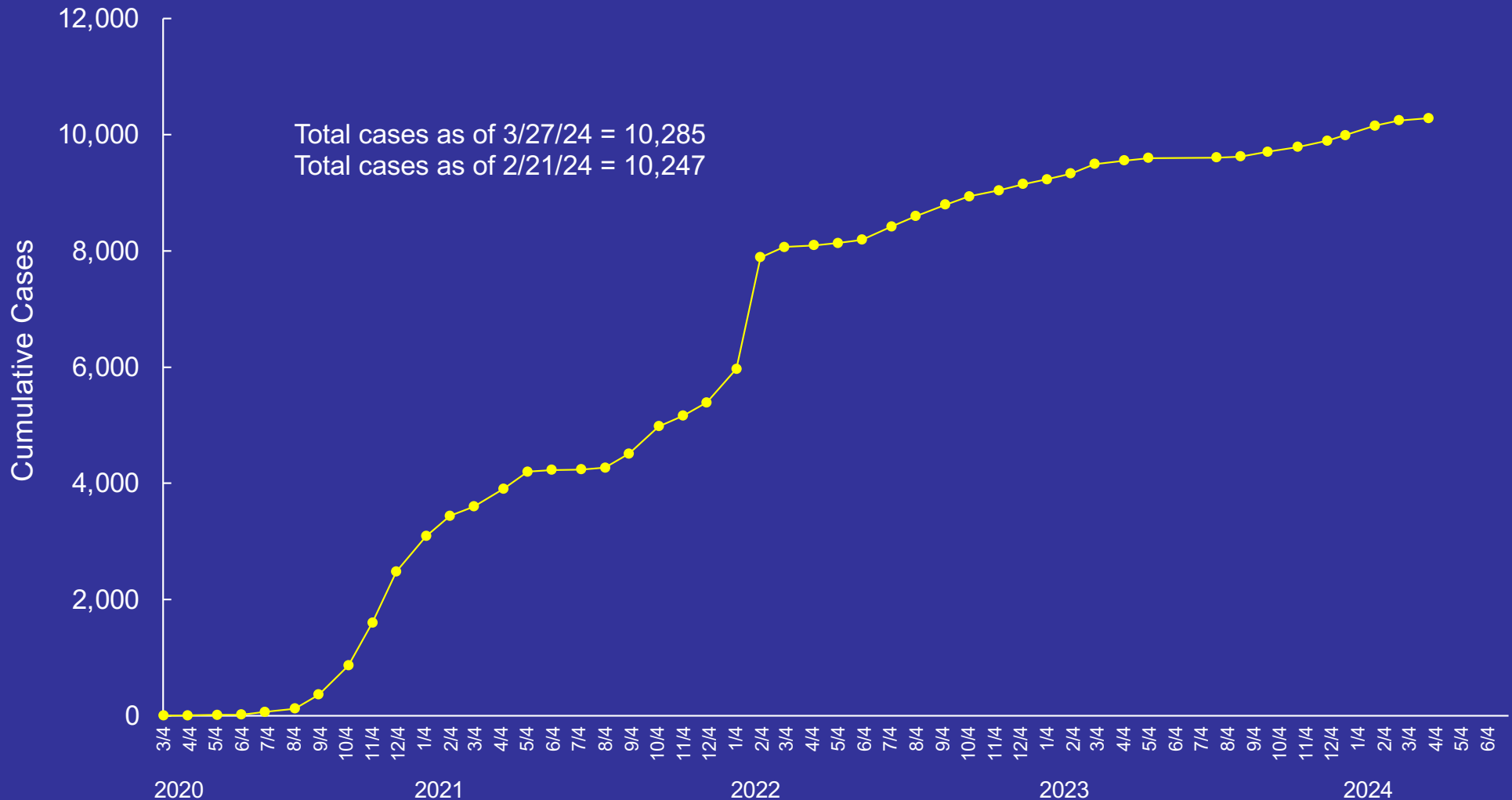


Brookings COVID-19 Situation

2020-2024 Cumulative Number of Cases

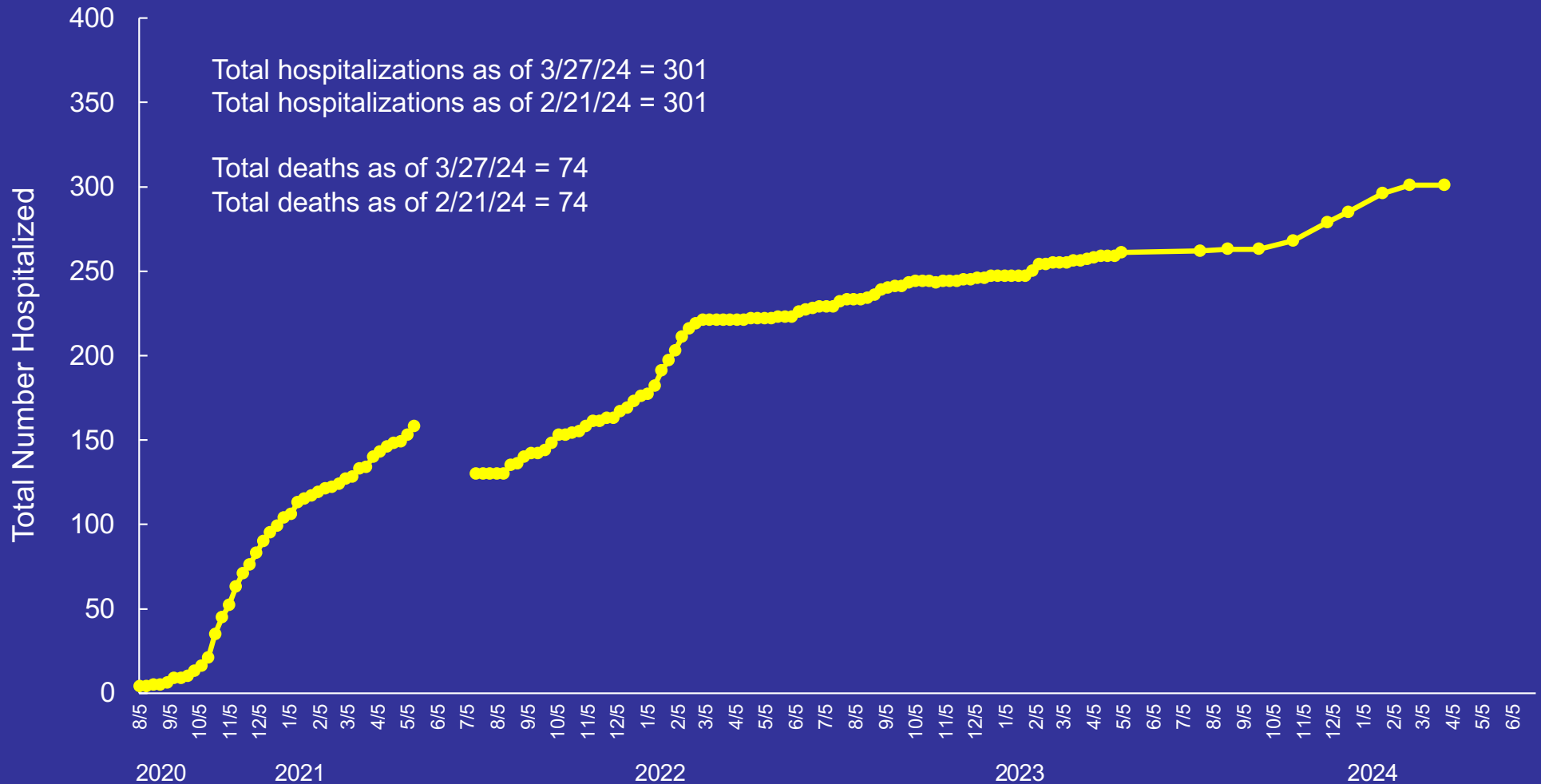
Does not include results of home tests available starting January 2022



State residents only. Includes confirmed cases by PCR & probable cases by antigen testing.
Significant DOH dashboard & reporting changes, summer 2023

Brookings COVID-19 Situation

2020-2024 Cumulative Number of New Hospitalizations

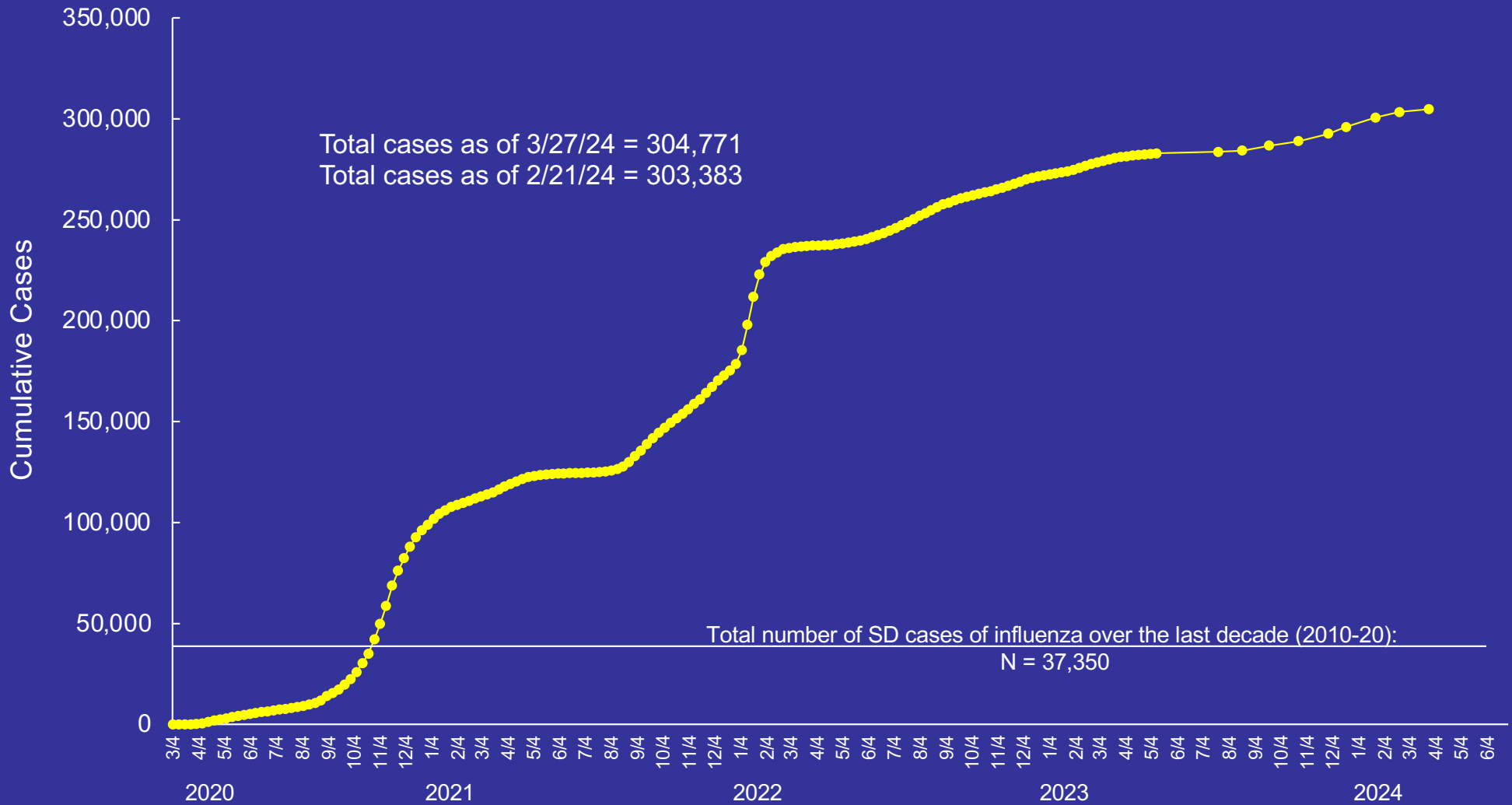


Includes only Brookings County residents. Between 5/26 & 7/14/21, new admissions could not be determined - SDDOH cleaned the hospitalization database (removing duplicates, out-of-state residents, etc.) leading to a lower total number of hospitalizations. Significant DOH dashboard & reporting changes, summer 2023

South Dakota COVID-19 Situation

2020-2024 Cumulative Number of Cases

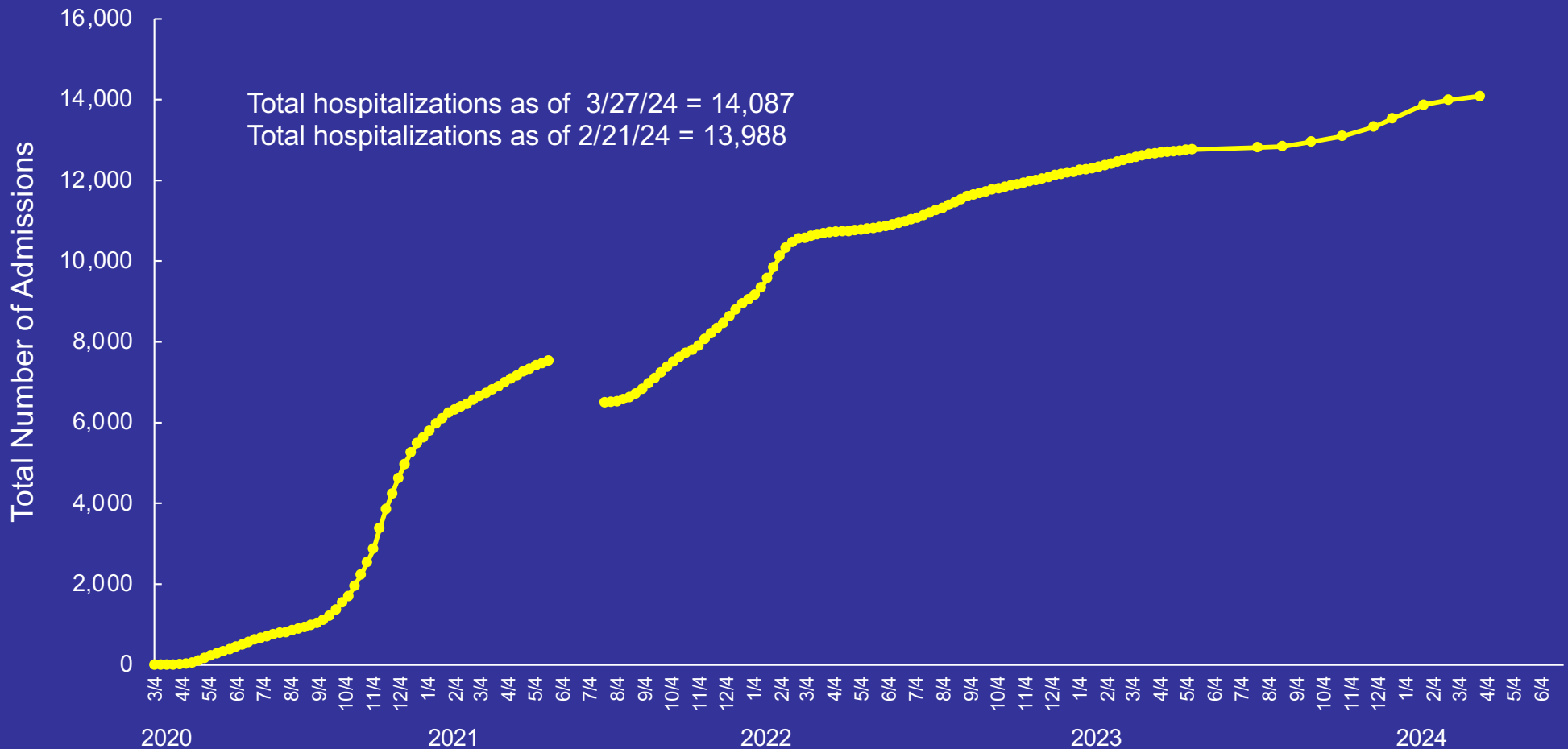
Does not include results of home tests available starting January 2022



State residents only. Includes confirmed cases by PCR & probable cases by antigen testing.
Significant DOH dashboard & reporting changes, summer 2023

South Dakota COVID-19 Situation

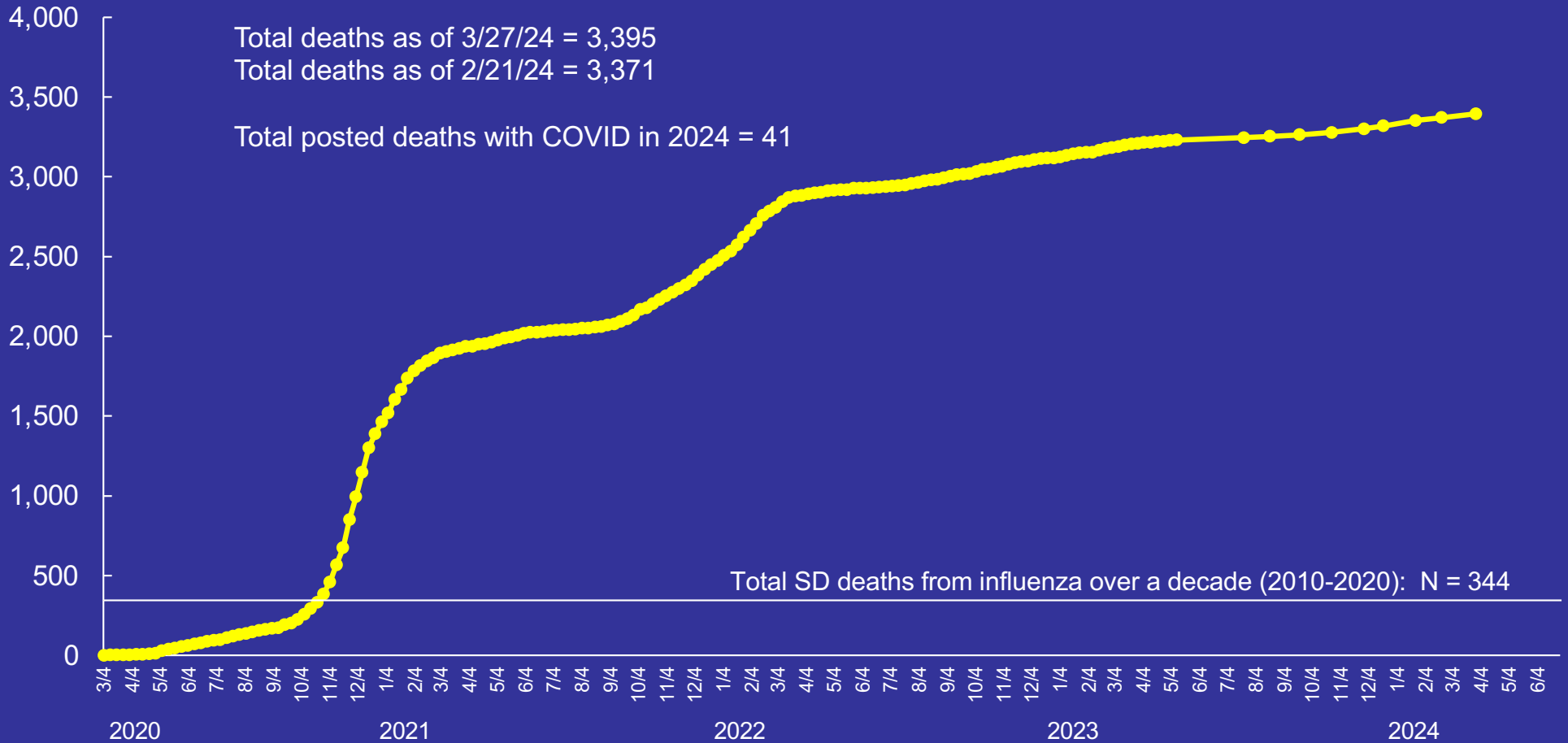
2020-2024 Cumulative Hospitalization Data



Between 5/26 & 7/14/21, new admissions could not be determined - SDDOH cleaned the hospitalization database (removing duplicates, out-of-state residents, etc.), leading to a lower total number of hospitalizations. Significant DOH dashboard & reporting changes, summer 2023.

South Dakota COVID-19 Situation

2020-2024 Cumulative Number of Deaths

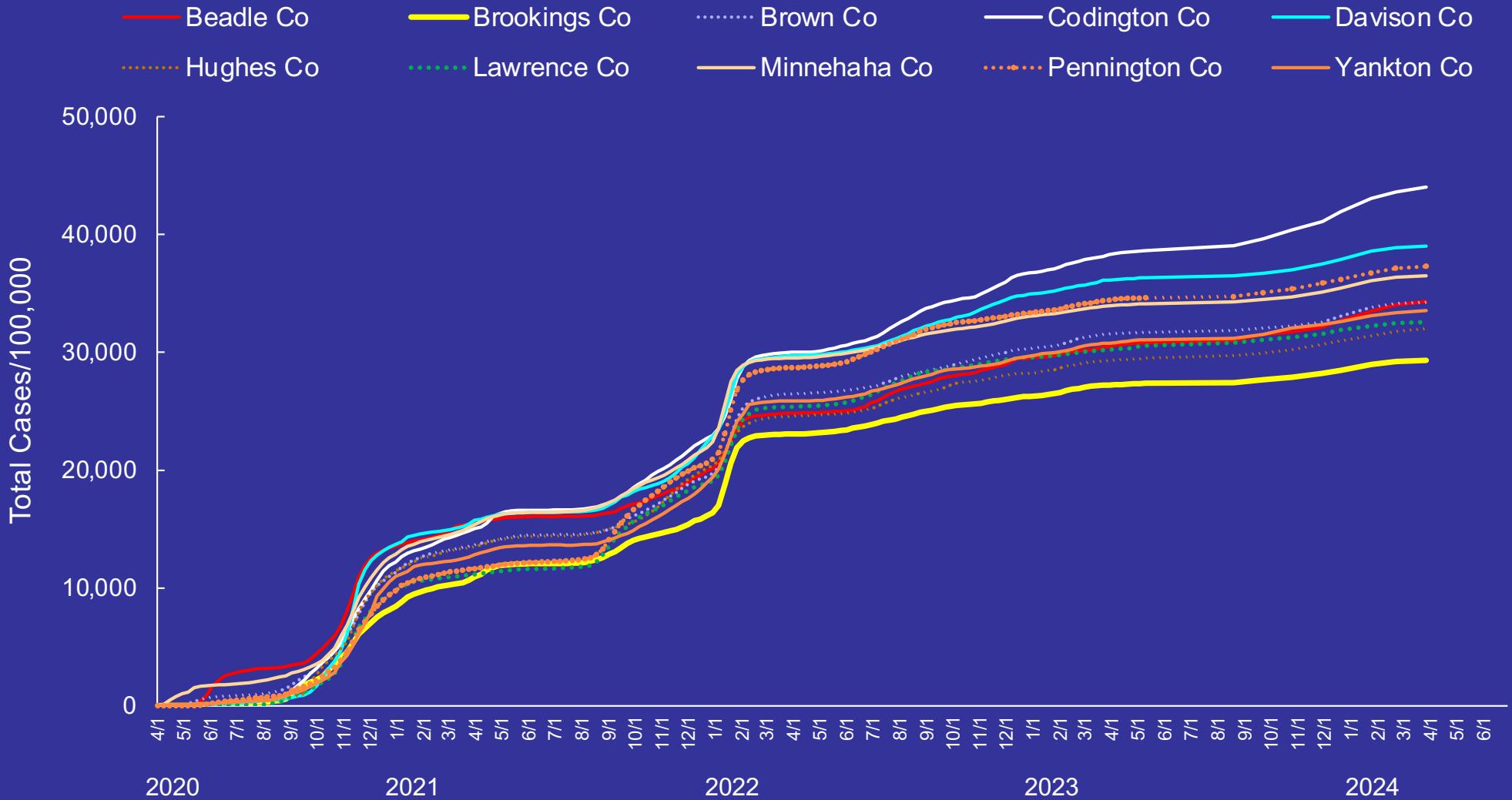


Dept of Health does not report deaths until a certified death record is filed. By law, a death record must be filed within 5 days of the date of death. Deaths includes COVID-19 cases reported who died with COVID-19 infection. Significant DOH dashboard & reporting changes, summer 2023

Counties with Top 10 Most Populated Cities

Cumulative Cases per 100,000 Population, 2020-2024

Does not include results of home tests available starting January 2022

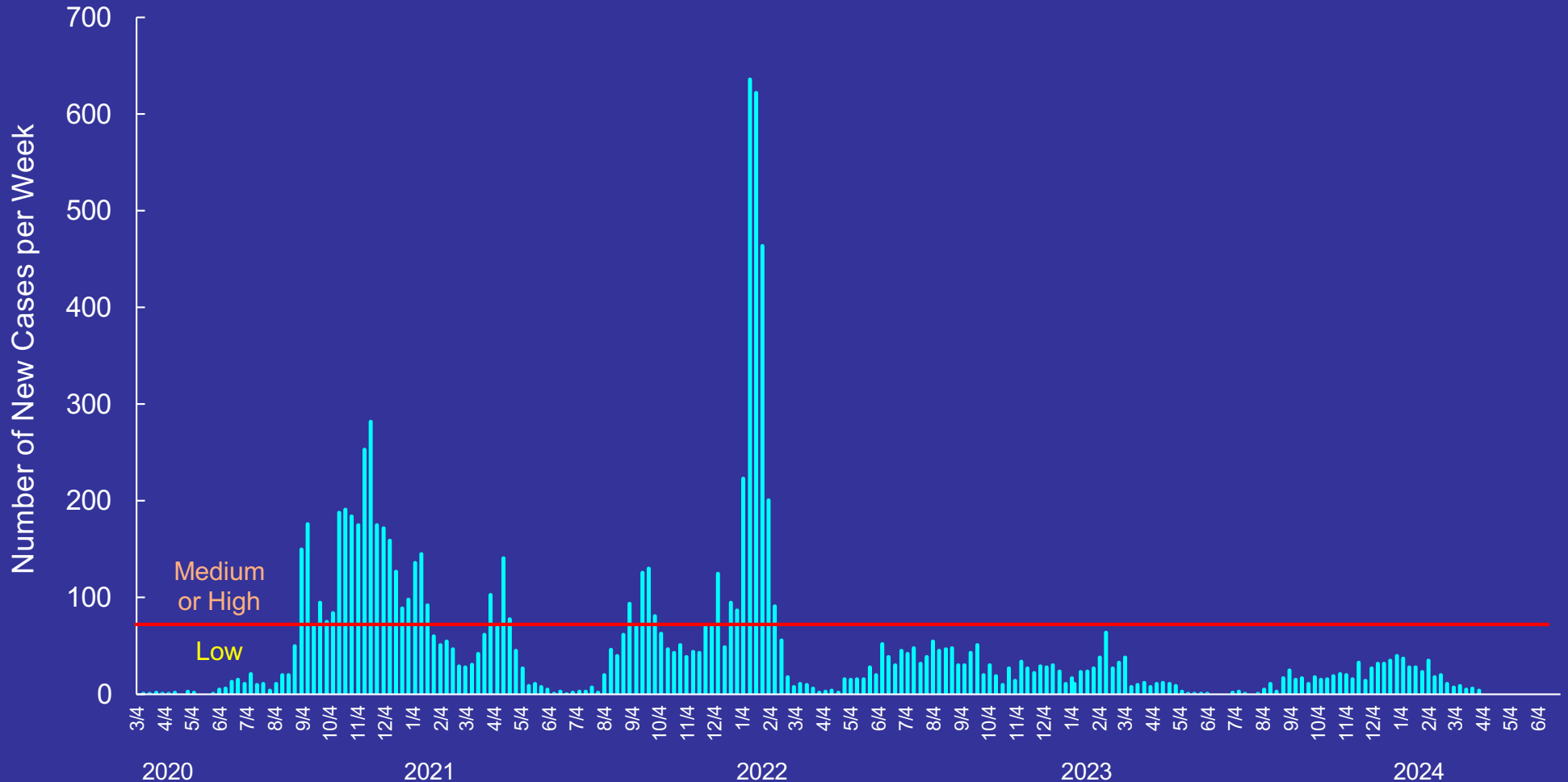


Significant DOH dashboard & reporting changes, summer 2023

Brookings COVID-19 Situation

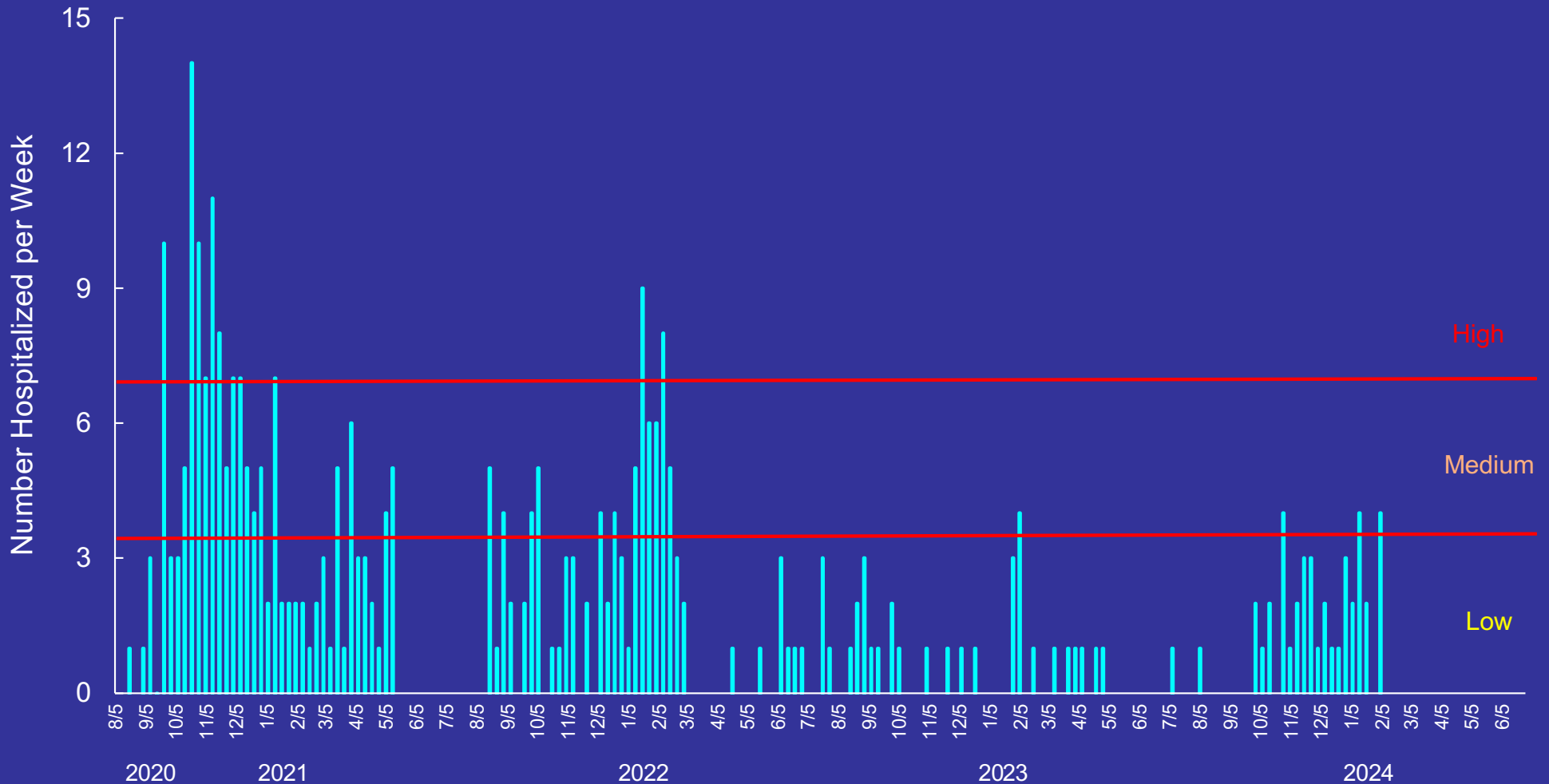
2020-2024 Number of Confirmed & Probable COVID-19 Cases per Week

Does not include results of home tests available starting January 2022



Brookings COVID-19 Situation

2020-2024 Number of New Hospitalizations per Week



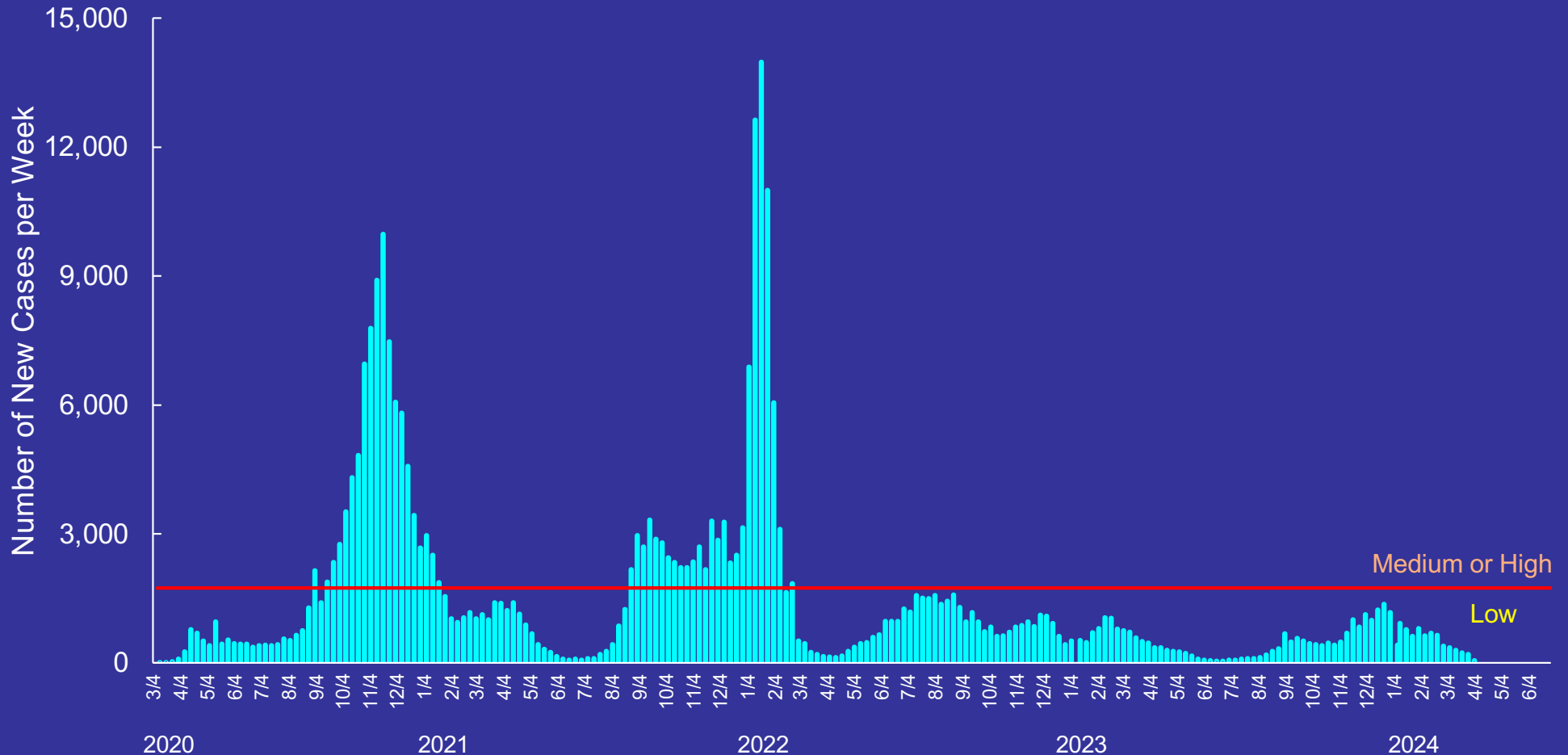
Lines shown above are 10 and 20 new hospital admissions in past 7 seven days per 100,000 population (n=3.5 and 7, respectively). Includes only Brookings County residents. Between 5/26 & 7/14/21, new admissions could not be determined - SDDOH cleaned the hospitalization database (removing duplicates, out-of-state residents, etc.) leading to a lower total number of hospitalizations.

^ There is a delay in reporting deaths due to certification.

South Dakota COVID-19 Situation

2020-2024 Confirmed & Probable Cases per Week

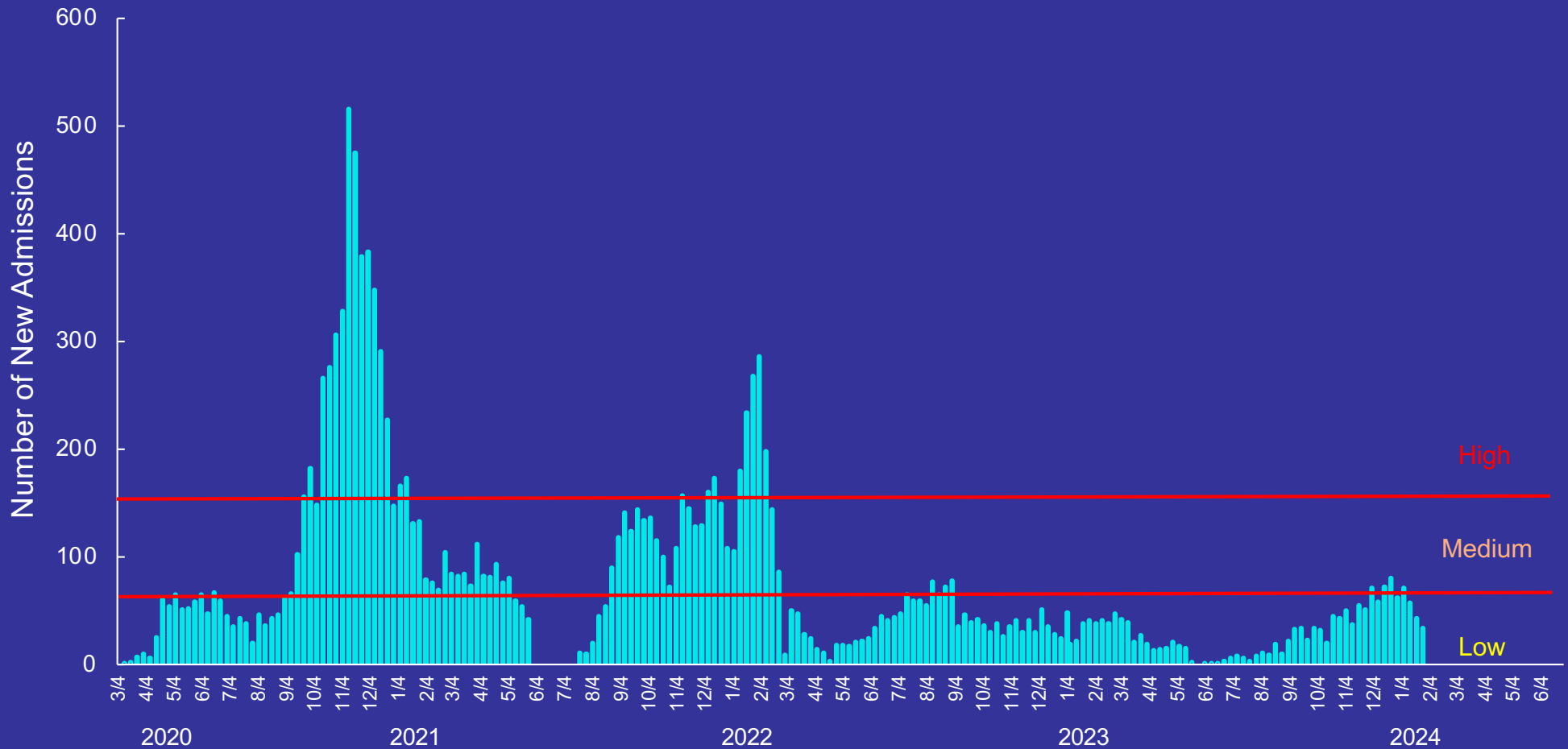
Does not include results of home tests available starting January 2022



Line shown for new cases per 100,000 population in past 7 days that was previously used to define community level of spread.

South Dakota COVID-19 Situation

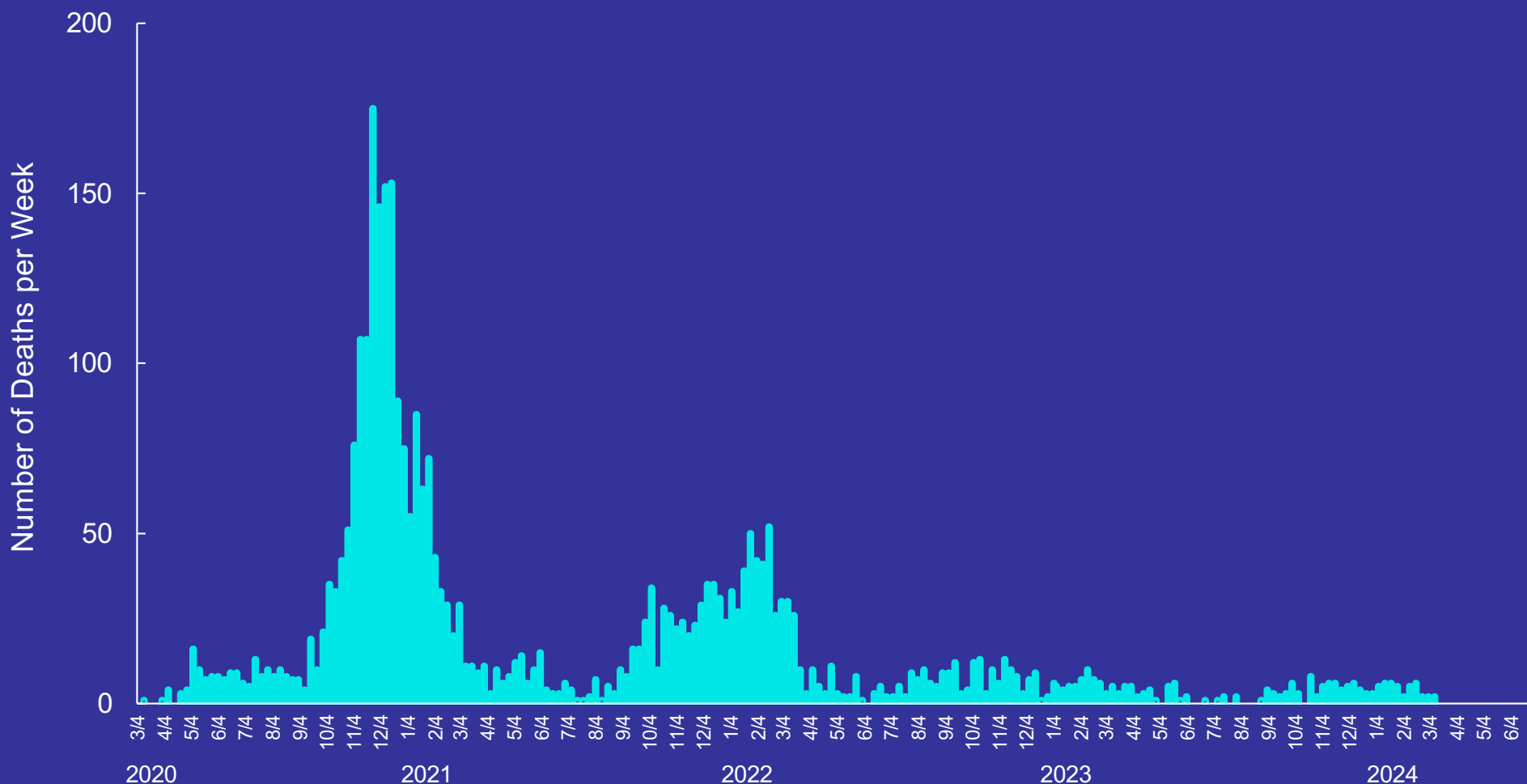
2020-2024 Weekly Hospitalization Data



Lines shown above are 10 and 20 new hospital admissions in past 7 seven days per 100,000 population ($n=88$ and 176 , respectively). New admissions include only state residents; does not include patients on home health care. Between 5/26 & 7/14/21, new admissions could not be determined - SDDOH cleaned the hospitalization database (removing duplicates, out-of-state residents, etc.) leading to a lower total number of hospitalizations.

South Dakota COVID-19 Situation

2020-2024 Number of Deaths per Week among People with COVID-19



Beginning in January 2023 deaths are by week of death; prior to this they are by date posted on the dashboard.